

WATER FILLER CAP ASSEMBLY



MODEL 390 WITH 1" MNPT

The Model 390 has an automotive type radiator cap. It is supplied with a 3/16" hole in the filler neck. Two choices of radiator caps are available.

Model Number	Radiator Cap Pressure Rating
390-7	7 lb.
390-1K	15 lb.



MODEL 29508 WITH 1" MNPT

The Model 29508 has an automotive type radiator cap. It is supplied with a 1/4" OD vent tube in the filler neck. Two choices of radiator caps are available.

Model Number	Radiator Cap Pressure Rating
29508-7	7 lb.
29508-15	15 lb.

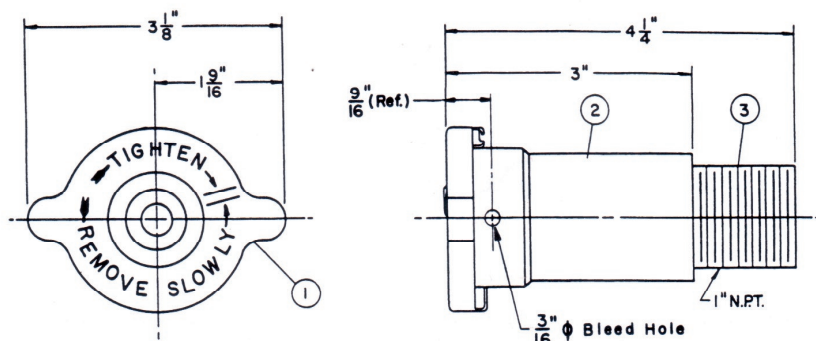


MODEL 1794 WITH 2" MNPT

The Model 1794 has a truck radiator cap. It is supplied with a 5/16" OD vent tube in the filler neck. Two choices of radiator caps are available.

Model Number	Radiator Cap Pressure Rating
1794-7	7 lb.
1794-15	15 lb.

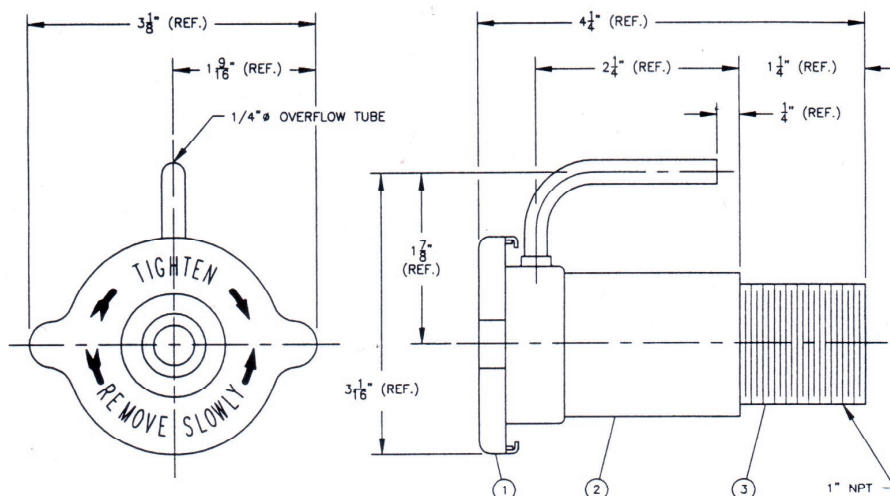
MODEL 390 FILLER CAP ASSEMBLY



REPLACEMENT RADIATOR CAP

	P/N
7#	A-3352
15#	A-733

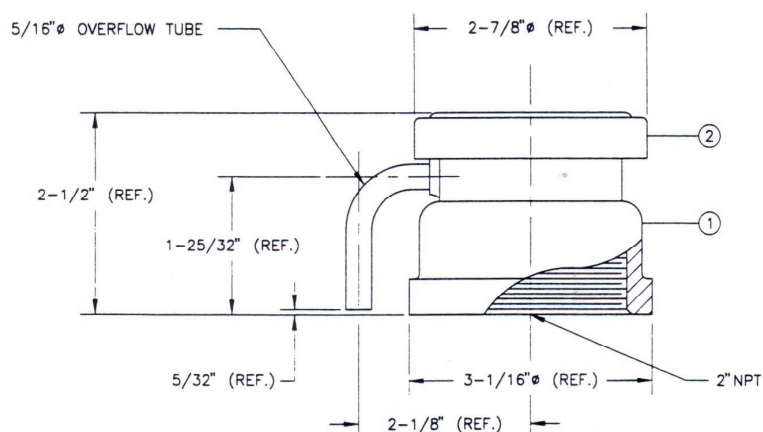
MODEL 29508 FILLER CAP ASSEMBLY



REPLACEMENT RADIATOR CAP

	P/N
7#	A-3352
15#	A-733

MODEL 1794 FILLER CAP ASSEMBLY



REPLACEMENT RADIATOR CAP

P/N

Represented by:

Tulsa
 PO Box 470426
 Tulsa, OK 74147
 phone 918.663.4406
 fax 918.663.4480
<http://www.kenco-eng.com>
 email: info@kenco-eng.com

Baton Rouge
 11616 Industriplex, Suite 14
 Baton Rouge, LA 70809
 phone 504.755.1912
 fax 504.755.1913
<http://www.kenco-eng.com>